



## LVT7 Series

## Architectural LED Troffer

### Descriptions

The architectural LED troffer fixture adopts the latest optical and LED technology, provides a single pleasant volumetric soft indirect light that fills any interior space, giving it a larger, brighter, and more productive ambiance.

The troffers come in 2x2 and 2x4 for TBar/Grid ceilings and are designed for easy installation and maximum energy savings. They can be both surface mounted and recessed mounted.

All troffers are available in DLC Premium, come with typically efficiency of 125 lm/w and excellent consistent color, available in 3500K, 4000K and 5000K CCT.



### Specification Features

#### Construction

Rugged, metal sheet housing. Integrated housing with advanced thermal transmission. Polyester powder coating, matt white finish, rust and corrosion proof.

#### Electrical

Integral UL Class II listed high performance LED driver. Universal input 120-277VAC, 50/60Hz, PF>0.95. High input voltage 347V/480V optional.

#### Optical

Frosted Polycarbonate or PC lens. High performance LM80 LEDs (Seoul). 4000K CCT & CRI>80 standard. 3500/5000K CCT optional. Typically 125lm/w @ 4000K. Indirect lighting

#### Environmental

Operating Temperature 4°F to 122°F (-20°C to 50°C)  
More than 100,000 hours life L70 TM21 @ 70°C  
UL listed suitable for damp locations.

#### Installation/Mounting

Recessed mount

#### Control

0-10V, 10% ~ 100% dimming.  
Motion sensor optional  
Emergency batter back-up optional.

#### Warranty

5-year limited warranty

Ordering Information

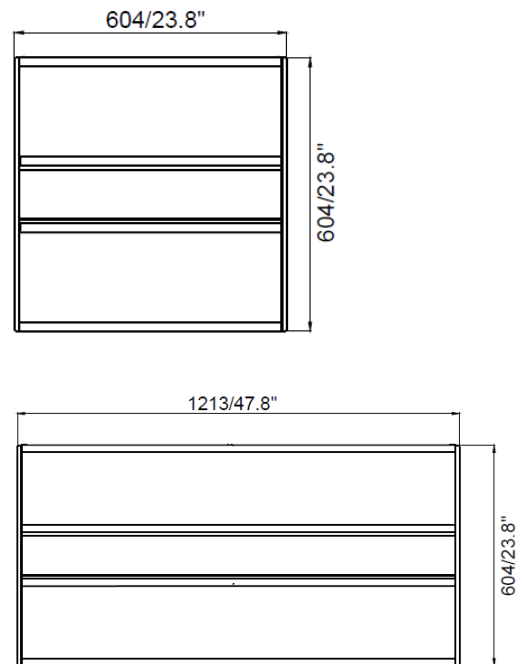
Example : LVT7-24/XX/YDM/ 840 Blank/347V/347-480V

LVT3	24	XX	YDM	840	Blank
Product Series	Size	Wattage	Dimming	CCT	Voltage
LVT7 series LED Troffer	22 2x2 24 2x4	XX can be any data	YDM 0-10V	835 3500K 80CRI 840 4000K 80CRI 850 5000K-80CRI	Blank 120-277V 347V 347V 480V 347-480V

Technical And Performance Data

Model	Watts W	4000K CCT	
		Lumens lm	Efficacy lm/w
LVT7-22/20	20	2500	125
LVT7-22/25	25	3130	125
LVT7-22/30	30	3750	125
LVT7-22/34	34	4250	125
LVT7-24/25	25	3130	125
LVT7-24/35	35	4375	125
LVT7-24/45	45	5625	125

Dimension



Optional Accessories



Motion sensor



Emergency battery pack